



**OUR**  
**BIGGEST SALE**  
**OF THE YEAR**

**OVER 180 PRODUCTS ON SALE!**

**NEW! IKA INCUBATOR**

Ideal for Microbiology Applications & more!

**APERA INSTRUMENTS**

Save on Pocket & Handheld Testers, Turbidity Meters and Benchtop Meters

**ROCKER EQUIPMENT DEALS**

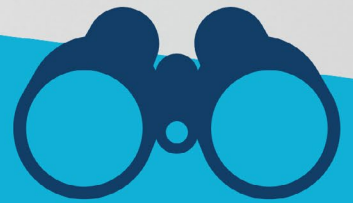
Manifolds & Filter Holders, Dry Block Heaters, Vacuum Pumps and more! Save BIG on Lafil Pumps!

**NEW PRODUCT CATALOGUE**

View our entire product range | 2,400 Products

**THERMOMETERS**

Plenty in stock ready to go!



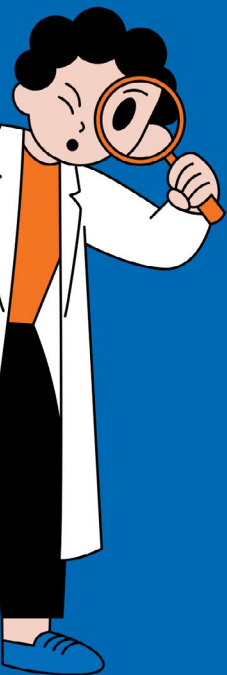
**JOIN THE  
SCAVENGER  
HUNT!**

See next page



**OVER 40 PRIZES TO BE WON!**

No minimum spend or purchase required to enter



# Scavenger Hunt!

Join in on the fun!

## WIN PRIZES!

### What you can win:

- Gift hampers
- One of 6 Apera Meters!
- A set of 3 Duran® Genius Bottles
- Balances from A&D
- Free delivery and discount coupons



## How to Play:

### Download the question form

Access the scavenger hunt questions on your phone or desktop by clicking here or scanning the QR code.

### Complete your details

Once you've done this step, you'll see your first question.

### Start hunting!

Complete all questions.

### Submit your entry

All questions must be complete and correct to be included in our prize draw. We have lots of prizes up for grabs!

### Relax!

Leisurely browse through our 'Biggest Sale of the Year' promotion! Let others in your team know about the Scavenger Hunt. Who doesn't like free stuff?

## 40 CHANCES TO WIN A PRIZE!



**Entries Close 31st March 2025**

Winner's contacted via email.

# Balances | Analytical

## GR200


Advanced, reliable and accurate weighing, featuring internal automatic calibration function, RS-232C data output and data logging as standard. Has a unique, ergonomic door design for easy access. It is covered by industry leading 5 year warranty.

- Large weighing capacity 210g, making it ideal for larger samples and quantities
- Full digital internal calibration function
- Large memory storage, up to 200 sets of weighing data
- Sealed keypad protects against spills and dust
- GLP compliant data output to match quality systems
- 85mm Ø pan size
- Built-in windshield

### Advanced & Reliable

210g x 0.1mg (0.0001g)



| PRODUCT CODE | DESCRIPTION                     | PACK SIZE | PRICE        | SALE  |
|--------------|---------------------------------|-----------|--------------|---|
| <u>GR200</u> | Balance Analytical 210g x 0.1mg | Each      | <u>LOGIN</u> | <u>LOGIN</u><br> |

## HR250AZ

Our best-selling analytical balance, the HR250AZ utilises proven A&D sensor technology to deliver superior performance with fast, accurate measurements. It has a range of 0.1 milligram to 10 micrograms readability. It is covered by industry leading 5 year warranty.

- Fast stabilisation in 2 seconds
- Large removable breeze break
- Compact footprint
- Internal calibration
- Clear, reverse-backlit LCD
- 14 weighing units
- GLP/GMP/GCP/ISO compliant output
- Counting mode with Automatic Counting Accuracy Improvement function
- 90mm Ø pan size
- Percent mode and statistical calculation function

### Compact & Robust

252g x 0.1mg (0.0001g)



| PRODUCT CODE   | DESCRIPTION   | PACK SIZE | PRICE        | SALE         |
|----------------|---|-----------|--------------|--------------|
| <u>HR250AZ</u> | Balance Analytical 252g x 0.1mg (with large breeze break) | Each      | <u>LOGIN</u> | <u>LOGIN</u> |

Prices exclude GST. Special prices expire 31/03/25 or while stocks last. E.&O.E.

# Balances | Precision

## FZ-I

Top of the range performance at an affordable price!  
The FZ-i series easy one touch calibration provides high reliability & fail safe calibration.

- Fast 1 second stabilisation with the C-SHS weight sensor
- Complies with GLP, GMP, GCP and ISO
- Multiple weighing units
- Internal calibration
- 3 year warranty
- Supplied with a small breeze break



| PRODUCT CODE            | DESCRIPTION   | PAN SIZE | PRICE                 | SALE                  |
|-------------------------|---------------|----------|-----------------------|-----------------------|
| <a href="#">FZ500I</a>  | 520g x 0.001g | 130mm Ø  | <a href="#">LOGIN</a> | <a href="#">LOGIN</a> |
| <a href="#">FZ5000I</a> | 5200g x 0.01g | 150mm Ø  | <a href="#">LOGIN</a> | <a href="#">LOGIN</a> |

## Scales

### EJ SERIES

Accurate, high-quality and stackable.  
The EJ Series also supports multiple weighing units.

- AC or battery (4 x AA)
- Backlit display
- RS232 optional
- External calibration



| PRODUCT CODE           | DESCRIPTION   | PAN SIZE    | PRICE                 | SALE                  |
|------------------------|---------------|-------------|-----------------------|-----------------------|
| <a href="#">EJ610</a>  | 610g x 0.01g  | 110mm Ø     | <a href="#">LOGIN</a> | <a href="#">LOGIN</a> |
| <a href="#">EJ6100</a> | 6,100g x 0.1g | 127 x 140mm | <a href="#">LOGIN</a> | <a href="#">LOGIN</a> |

### HT SERIES

Low-cost, high-quality solution to general weighing applications.

- Battery (4 x AA) or AC adapter (optional extra)
- Large LCD display
- Supplied with a perspex carry case



| PRODUCT CODE           | DESCRIPTION | PAN SIZE    | PRICE                 | SALE                  |
|------------------------|-------------|-------------|-----------------------|-----------------------|
| <a href="#">HT500</a>  | 510g x 0.1g | 132 x 130mm | <a href="#">LOGIN</a> | <a href="#">LOGIN</a> |
| <a href="#">HT5000</a> | 5,100g x 1g | 132 x 130mm | <a href="#">LOGIN</a> | <a href="#">LOGIN</a> |

Prices exclude GST. Special prices expire 31/03/25 or while stocks last. E.&O.E.

# Bottle Top Dispensers

## OPTIFIX

Save Over  
20%!

- Volume setting system
  - Dispensing piston
  - Valve block
  - Finger protection cap
  - Precision dispensing cylinder
  - FIX adapter
  - Autoclavable\*
- \*Basic & Solvent can be sterilised at 121°C

### Supplied with:

- Standard GL 32 thread
- GL 40 and GL 45 adapters (PP)
- PTFE intake tube

**Basic:** For general dispensing, aqueous solutions, acids and bases. Glass cylinder, PTFE encased glass piston.

| CODE                       | TYPE  | VOLUME RANGE | GRADUATION | PRICE                 | SALE                  |
|----------------------------|-------|--------------|------------|-----------------------|-----------------------|
| <a href="#">101.080-27</a> | Basic | 0.4 - 2mL    | 0.1mL      | <a href="#">LOGIN</a> | <a href="#">LOGIN</a> |
| <a href="#">101.080-33</a> | Basic | 1 - 5mL      | 0.1mL      | <a href="#">LOGIN</a> | <a href="#">LOGIN</a> |
| <a href="#">101.080-38</a> | Basic | 2 - 10mL     | 0.2mL      | <a href="#">LOGIN</a> | <a href="#">LOGIN</a> |
| <a href="#">101.080-44</a> | Basic | 5 - 30mL     | 0.5mL      | <a href="#">LOGIN</a> | <a href="#">LOGIN</a> |
| <a href="#">101.080-48</a> | Basic | 10 - 50mL    | 1mL        | <a href="#">LOGIN</a> | <a href="#">LOGIN</a> |
| <a href="#">101.080-51</a> | Basic | 20 - 100mL   | 2mL        | <a href="#">LOGIN</a> | <a href="#">LOGIN</a> |



**Solvent:** For dispensing solvents. Glass cylinder, glass piston.

| PRODUCT CODE               | TYPE    | VOLUME RANGE | GRADUATION | PRICE                 | SALE                  |
|----------------------------|---------|--------------|------------|-----------------------|-----------------------|
| <a href="#">101.081-27</a> | Solvent | 0.4 - 2mL    | 0.1mL      | <a href="#">LOGIN</a> | <a href="#">LOGIN</a> |
| <a href="#">101.081-33</a> | Solvent | 1 - 5mL      | 0.1mL      | <a href="#">LOGIN</a> | <a href="#">LOGIN</a> |
| <a href="#">101.081-38</a> | Solvent | 2 - 10mL     | 0.2mL      | <a href="#">LOGIN</a> | <a href="#">LOGIN</a> |
| <a href="#">101.081-44</a> | Solvent | 5 - 30mL     | 0.5mL      | <a href="#">LOGIN</a> | <a href="#">LOGIN</a> |
| <a href="#">101.081-48</a> | Solvent | 10 - 50mL    | 1mL        | <a href="#">LOGIN</a> | <a href="#">LOGIN</a> |
| <a href="#">101.081-51</a> | Solvent | 20 - 100mL   | 2mL        | <a href="#">LOGIN</a> | <a href="#">LOGIN</a> |
| <a href="#">101.081-53</a> | Solvent | 40 - 200mL   | 5mL        | <a href="#">LOGIN</a> | <a href="#">LOGIN</a> |



**Safety:** For dispensing strong fuming acids and smelling liquids, manual dispensing action for additional operator safety. Glass cylinder, PTFE encased glass piston.

| PRODUCT CODE               | TYPE   | VOLUME RANGE | GRADUATION | PRICE                 | SALE                  |
|----------------------------|--------|--------------|------------|-----------------------|-----------------------|
| <a href="#">101.107-27</a> | Safety | 0.4 - 2mL    | 0.1mL      | <a href="#">LOGIN</a> | <a href="#">LOGIN</a> |
| <a href="#">101.107-33</a> | Safety | 1 - 5mL      | 0.1mL      | <a href="#">LOGIN</a> | <a href="#">LOGIN</a> |
| <a href="#">101.107-38</a> | Safety | 2 - 10mL     | 0.2mL      | <a href="#">LOGIN</a> | <a href="#">LOGIN</a> |
| <a href="#">101.107-44</a> | Safety | 5 - 30mL     | 0.5mL      | <a href="#">LOGIN</a> | <a href="#">LOGIN</a> |
| <a href="#">101.107-48</a> | Safety | 10 - 50mL    | 1mL        | <a href="#">LOGIN</a> | <a href="#">LOGIN</a> |
| <a href="#">101.107-51</a> | Safety | 20 - 100mL   | 2mL        | <a href="#">LOGIN</a> | <a href="#">LOGIN</a> |



**HF:** For dispensing hydrofluoric acid, in addition to all media handled by other Optifix® dispensers. PTFE cylinder, solid PTFE piston with sealing lip.

| PRODUCT CODE               | TYPE | VOLUME RANGE | GRADUATION | PRICE                 | SALE                  |
|----------------------------|------|--------------|------------|-----------------------|-----------------------|
| <a href="#">101.106-38</a> | HF   | 2 - 10mL     | 0.2mL      | <a href="#">LOGIN</a> | <a href="#">LOGIN</a> |
| <a href="#">101.106-44</a> | HF   | 5 - 30mL     | 1mL        | <a href="#">LOGIN</a> | <a href="#">LOGIN</a> |



Prices exclude GST. Special prices expire 31/03/25 or while stocks last. E.&O.E.

# DURAN® YOUTILITY® Bottles



The specially shaped recessed grips on both sides of the bottle ensure easy and safe handling. The slim shape of the YOUTILITY® bottle saves space when used in autoclaves and laboratory refrigerators.

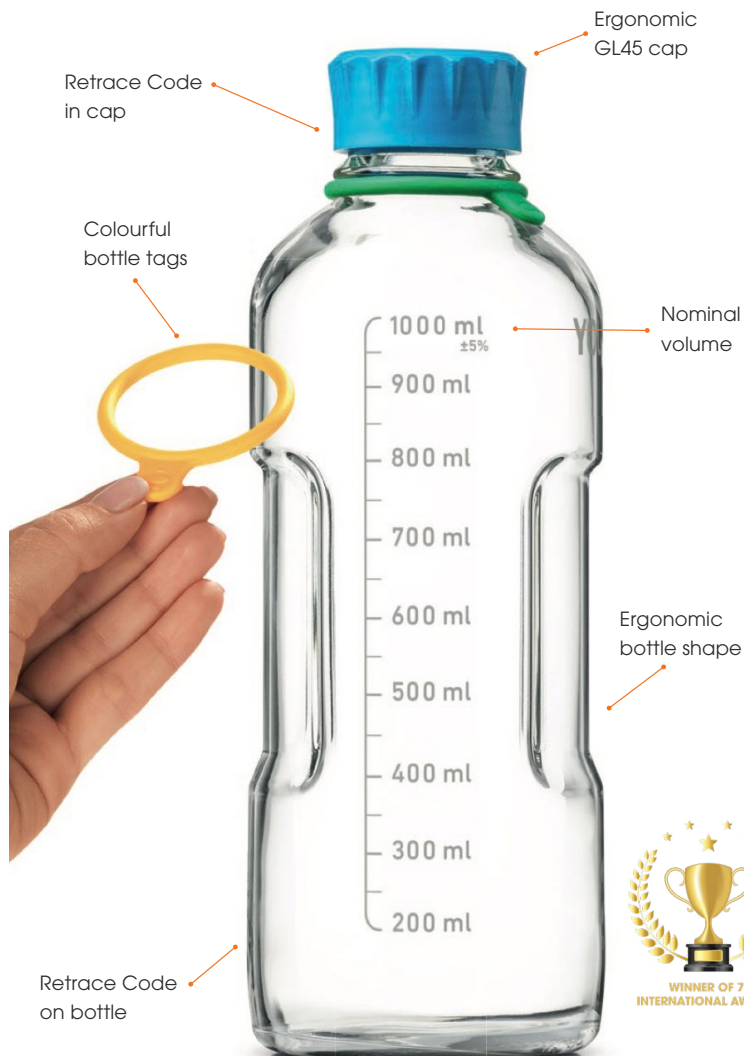
The bottles can also be stored horizontally on their side. A specially marked area fits perfectly with the self-adhesive DURAN® YOUTILITY® labels.



## FEATURES + BENEFITS

- Winner of 7 international awards
- Easy handling with specially shaped gripping zones on both sides of the bottle
- Ergonomic shape of the screw cap has comfortable grooves and ridges for easier tightening or removal
- Faster opening or closing with the shortened bottle thread (GL45 compatible)
- Space saving, slimmer design takes up less space in autoclaves
- Made from DURAN® Borosilicate 3.3 glass

**YOUTILITY® Bottles are slimmer and easier to hold than standard DURAN® bottles**



**20% OFF!**

Supplied with Youtility® caps and pouring rings

| PRODUCT CODE              | VOLUME  | HEIGHT | DEPTH (OD) | PACK SIZE | PRICE                 | SALE                  |
|---------------------------|---------|--------|------------|-----------|-----------------------|-----------------------|
| <a href="#">218812854</a> | 125mL   | 124mm  | 55mm       | 4         | <a href="#">LOGIN</a> | <a href="#">LOGIN</a> |
| <a href="#">218813653</a> | 250mL   | 158mm  | 66mm       | 4         | <a href="#">LOGIN</a> | <a href="#">LOGIN</a> |
| <a href="#">218814452</a> | 500mL   | 193mm  | 78mm       | 4         | <a href="#">LOGIN</a> | <a href="#">LOGIN</a> |
| <a href="#">218815457</a> | 1,000mL | 253mm  | 93mm       | 4         | <a href="#">LOGIN</a> | <a href="#">LOGIN</a> |

### Accessories

| PRODUCT CODE              | DESCRIPTION                  | PACK SIZE | PRICE                 |
|---------------------------|------------------------------|-----------|-----------------------|
| <a href="#">292292802</a> | Cap Screw GL45 PP Cyan       | PK10      | <a href="#">LOGIN</a> |
| <a href="#">292412808</a> | Ring Pouring GL45 PP Cyan    | PK16      | <a href="#">LOGIN</a> |
| <a href="#">292432904</a> | Tag Bottle Silicone for GL45 | PK16      | <a href="#">LOGIN</a> |



Prices exclude GST. Special prices expire 31/03/25 or while stocks last. E.&O.E.

# Dry Block Heaters

## SAHARA 310 & 320

Made of one-piece aluminum coated with PTFE that allows multiple uses with aluminum blocks, armor beads or water. Accurate and stable temperature control that's suitable for all types of biological and life science laboratory applications.

- Choose from 1 or 2 block heaters
- Programmable timer & auto shut off with alarm
- Built-in memory can store up to 3 user definable heating programs
- Temperature range: RT +5°C to 150°C
- Resolution: 0.1°C
- Temperature accuracy: ± 0.2°C (@ 37°C)
- Overheat protection

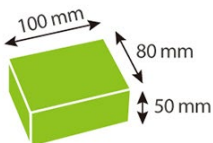


[WATCH NOW](#)

**FREE  
BLOCK**

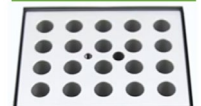
with every Dry Block Heater purchase

| PRODUCT CODE              | DESCRIPTION              | PACK SIZE | PRICE                 | SALE                   |
|---------------------------|--------------------------|-----------|-----------------------|------------------------|
| <a href="#">179310-22</a> | Heater Dry Block 1 Block | Each      | <a href="#">LOGIN</a> | <b>1 x FREE Block*</b> |
| <a href="#">179320-22</a> | Heater Dry Block 2 Block | Each      | <a href="#">LOGIN</a> | <b>1 x FREE Block*</b> |

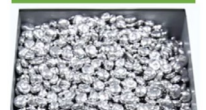


### MULTI-FUNCTION

#### Dry Bath



#### Bead Bath



#### Water Bath



| PRODUCT CODE              | DESCRIPTION                                   | PACK SIZE | PRICE                 | SALE         |
|---------------------------|---|-----------|-----------------------|--------------|
| <a href="#">179300-01</a> | Block 6.4 mm Ø, 0.2 mL, 64 well               | Each      | <a href="#">LOGIN</a> | <b>FREE*</b> |
| <a href="#">179300-02</a> | Block 8.2 mm Ø, 0.5 mL, 20 well               | Each      | <a href="#">LOGIN</a> | <b>FREE*</b> |
| <a href="#">179300-03</a> | Block 10.2 mm Ø, 1.5 mL (or 2.0mL), 20 well   | Each      | <a href="#">LOGIN</a> | <b>FREE*</b> |
| <a href="#">179300-05</a> | Block 13 mm Ø, 20 well                        | Each      | <a href="#">LOGIN</a> | <b>FREE*</b> |
| <a href="#">179300-06</a> | Block 20 mm Ø, 12 well                        | Each      | <a href="#">LOGIN</a> | <b>FREE*</b> |
| <a href="#">179300-07</a> | Block 25 mm Ø, 6 well                         | Each      | <a href="#">LOGIN</a> | <b>FREE*</b> |
| <a href="#">179300-10</a> | Block 17 mm Ø, 15 mL centrifuge tube, 12 well | Each      | <a href="#">LOGIN</a> | <b>FREE*</b> |

\*1 x Free block of your choice for each dry block heater purchased

# Vacuum Pumps

Rocker oil-free vacuum pumps are compact in size, lightweight and oil-mist-free. Perfect for vacuum filtration, microbiological tests, air sampling and suspended solids testing. Selected models are equipped with Prote™ overflow protection and a moisture trap with filter cartridge and vacuum regulator.

## ROCKER 300



The best seller in the laboratory for vacuum filtration, suspended solids testing, micro and air sampling.

### Applications:



**Max. Vacuum 99mBar**  
**Max. Flow Rate 20L/min**

- Vacuum Regulator ✓
- Filter Cartridge ✓
- Overflow Protection ✓
- Overheat Protection ✓



| PRODUCT CODE              | MODEL      | PRICE                 | PRICE                 |
|---------------------------|------------|-----------------------|-----------------------|
| <a href="#">167300-22</a> | Rocker 300 | <a href="#">LOGIN</a> | <a href="#">LOGIN</a> |

## ROCKER 400



As versatile as the 300, but with a higher flow rate of 34L/min.

### Applications:



**Max. Vacuum 99mBar**  
**Max. Flow Rate 34L/min**

- Vacuum Regulator ✓
- Filter Cartridge ✓
- Overflow Protection ✓
- Overheat Protection ✓



| PRODUCT CODE              | MODEL      | PRICE                 | SALE                  |
|---------------------------|------------|-----------------------|-----------------------|
| <a href="#">167400-22</a> | Rocker 400 | <a href="#">LOGIN</a> | <a href="#">LOGIN</a> |

## ROCKER 900

Reduce waiting time with efficient evacuation, the Rocker 900 has a flow rate of 90L/min.

### Applications:



**Max. Vacuum 85mBar**  
**Max. Flow Rate 90L/min**

- Vacuum Regulator ✓
- Filter Cartridge ✓
- Overflow Protection ✓
- Overheat Protection ✓



## CHEMKER 411

Made with PTFE parts to resist the most corrosive gases. The Chemker 411 has strong vacuum, essential to lower boiling points in processes like distillation.

### Applications:



**CHEMICAL RESISTANT**

**Max. Vacuum 10mBar**  
**Max. Flow Rate 18L/min**

- Vacuum Regulator ✓
- Filter Cartridge ✗
- Overflow Protection ✗
- Overheat Protection ✓



| PRODUCT CODE              | MODEL       | PRICE                 | SALE                  |
|---------------------------|-------------|-----------------------|-----------------------|
| <a href="#">167900-22</a> | Rocker 900  | <a href="#">LOGIN</a> | <a href="#">LOGIN</a> |
| <a href="#">169411-22</a> | Chemker 411 | <a href="#">LOGIN</a> | <a href="#">LOGIN</a> |

Applications Legend:



Prices exclude GST. Special prices expire 31/03/25 or while stocks last. E.&O.E.



# Manifolds

## 3 & 6 PLACE

Rocker Manifolds feature a detachable hose barb that can be connected to either side of the unit. All wetted parts are SS316 stainless steel. An adjustable vent valve integrated with the pipe helps to eliminate water hammer and drain out residual waste water.

- Supplied with No. 8 stopper funnel adapter
- SS316 stainless steel
- Quick-fit, ID8 hose barb
- Adjustable vent valve integrated with the pipe
- Individual control valve for each branch



\*pump, bottle and holders for illustration purposes only



| PRODUCT CODE              | DESCRIPTION             | DIMENSIONS     | PRICE                 | SALE                  |
|---------------------------|-------------------------|----------------|-----------------------|-----------------------|
| <a href="#">180300-01</a> | 3 Place Stainless Steel | 48 x 13 x 16cm | <a href="#">LOGIN</a> | <a href="#">LOGIN</a> |
| <a href="#">180600-01</a> | 6 Place Stainless Steel | 85 x 13 x 46cm | <a href="#">LOGIN</a> | <a href="#">LOGIN</a> |

# Filter Holders

## MAGNETIC MF SERIES

- Double-layer magnets
- One-handed operation
- Versatile, detachable hose fitting
- Smashproof PES material
- Accepts 47mm membranes
- High temperature resistance and re-usable (withstands many autoclave cycles)
- 50mL graduated increments

No filter flask?  
The MF3a & MF5a fit onto various reagent bottles & flasks!



### MF3 & MF5 (with stopper)



### MF3a & MF5a (short stem)



| PRODUCT CODE              | DESCRIPTION | VOLUME | INCLUDING LID | ATTACHMENT    | PRICE                 | SALE                  |
|---------------------------|-------------|--------|---------------|---------------|-----------------------|-----------------------|
| <a href="#">200300-00</a> | MF3         | 300mL  | No            | No. 8 Stopper | <a href="#">LOGIN</a> | <a href="#">LOGIN</a> |
| <a href="#">200300-01</a> | MF3         | 300mL  | Yes           | No. 8 Stopper | <a href="#">LOGIN</a> | <a href="#">LOGIN</a> |
| <a href="#">200500-00</a> | MF5         | 500mL  | No            | No. 8 Stopper | <a href="#">LOGIN</a> | <a href="#">LOGIN</a> |
| <a href="#">200500-01</a> | MF5         | 500mL  | Yes           | No. 8 Stopper | <a href="#">LOGIN</a> | <a href="#">LOGIN</a> |
| <a href="#">200310-00</a> | MF3a        | 300mL  | No            | Short Stem    | <a href="#">LOGIN</a> | <a href="#">LOGIN</a> |
| <a href="#">200310-01</a> | MF3a        | 300mL  | Yes           | Short Stem    | <a href="#">LOGIN</a> | <a href="#">LOGIN</a> |
| <a href="#">200510-00</a> | MF5a        | 500mL  | No            | Short Stem    | <a href="#">LOGIN</a> | <a href="#">LOGIN</a> |
| <a href="#">200510-01</a> | MF5a        | 500mL  | Yes           | Short Stem    | <a href="#">LOGIN</a> | <a href="#">LOGIN</a> |

Prices exclude GST. Special prices expire 31/03/25 or while stocks last. E.&O.E.

# Vacuum Pumps

## LAFIL 400

- Max. vacuum: 25mbar abs.
- Max. flow rate: 20L/min
- Overflow Protection ✓
- Thermal Protection ✓
- Vacuum Regulator ✓
- Dimensions: 35 x 24.3 x 29cm



### Applications:



[WATCH NOW](#)

| PRODUCT CODE              | DESCRIPTION | PRICE            | SALE                  |
|---------------------------|-------------|------------------|-----------------------|
| <a href="#">197400-22</a> | Lafil 400   | <b>CLEARANCE</b> | <a href="#">LOGIN</a> |

Available Quantity: 2

## LAFIL 300C

- PTFE coated providing chemical resistance
- Max. vacuum: 99mbar abs.
- Max. flow rate: 20L/min
- Thermal Protection ✓
- Vacuum Regulator ✓
- Dimensions: 35 x 24.3 x 29cm



### Applications:



| PRODUCT CODE              | MODEL      | PRICE            | SALE                  |
|---------------------------|------------|------------------|-----------------------|
| <a href="#">197330-22</a> | Lafil 300C | <b>CLEARANCE</b> | <a href="#">LOGIN</a> |

Available Quantity: 1

## PUMP VACUUM SYSTEM LAFIL 300-LF30

- Max. vacuum: 99mbar abs.
- Max. flow rate: 20L/min
- Thermal Protection ✓
- Overflow Protection ✓
- Vacuum Regulator ✓
- Dimensions: 33.5 x 23 x 45cm

### Supplied with:

- Lafil 300
- LF30 filtration set
- 1m silicone tubing

### Applications:



| PRODUCT CODE              | DESCRIPTION                  | PRICE            | SALE                  |
|---------------------------|------------------------------|------------------|-----------------------|
| <a href="#">197301-22</a> | Lafil 300-LF30 Vacuum System | <b>CLEARANCE</b> | <a href="#">LOGIN</a> |

Available Quantity: 2

## BIODOLPHIN-LB SUCTION KIT

Turn a Lafil into a Laboratory Suction System with the BioDolphin suction kit!

This kit is an ideal solution for cell culture aspiration and laboratory waste suction.

- Quick connection
- One-finger tip ejection
- Easy lock switch
- Multi-functional storage rack
- Autoclavable



[WATCH NOW](#)

| PRODUCT CODE              | DESCRIPTION            | PRICE            | SALE                  |
|---------------------------|------------------------|------------------|-----------------------|
| <a href="#">199100-00</a> | BioDolphin Suction Kit | <b>CLEARANCE</b> | <a href="#">LOGIN</a> |

Available Quantity: 2

Prices exclude GST. Special prices expire 31/03/25 or while stocks last. E.&O.E.

# Water Testing

## VALUE 20 SERIES | POCKET TESTERS

The economical choice for general water testing requirements, such as pools, spas, hydroponics, drinking water, cooling towers etc. Supplied with everything you need to get started!

- Large LCD display
- IP67 Water proof & dust proof
- Self diagnosis
- Stable reading indicator

**GREAT VALUE!**

| PRODUCT CODE | PH20                  | EC20  | TDS20   | SALT20                |
|--------------|-----------------------|---|---|-----------------------|
| PARAMETER    | pH                    | Cond.   | TDS   | Salinity              |
| RANGE        | 0 - 14.0              | 0 - 200.0 $\mu$ S/cm<br>0 - 2,000 $\mu$ S/cm<br>0 - 20.00 mS/cm | 0 - 100.0 ppm<br>0 - 1,000 ppm<br>0 - 10.00 ppt | 0 - 10.00 ppt         |
| RESOLUTION   | 0.1 pH                | 0.1/1 $\mu$ S; 0.01 mS  | 0.1/1ppm; 0.01 ppt                              | 0.01 ppt              |
| CALIBRATION  | 1 - 3 points          | 1 - 2 points  | 1 - 2 points                                    | 1 point               |
| PRICE        | <a href="#">LOGIN</a> | <a href="#">LOGIN</a>   | <a href="#">LOGIN</a>                           | <a href="#">LOGIN</a> |
| SALE         | <a href="#">LOGIN</a> | <a href="#">LOGIN</a>   | <a href="#">LOGIN</a>                           | <a href="#">LOGIN</a> |



APERAINSTRUMENTS

## ZENTEST® SMART | POCKET TESTERS

Apera 60-Z Smart Pocket Testers are the next-gen water testers designed for providing a seamless water testing experience. Powered by the ZenTest® Mobile App and connected via Bluetooth®.

- Smart self diagnosis
- Upgraded sensor technology
- Replaceable electrode
- Cloud based data management
- Hybrid design (can be used with or without a smart phone)



PC60-Z



PH60-Z



PH60S-Z



PH60F-Z



ORP60-Z

| PRODUCT CODE |            | PC60-Z                       | PH60-Z                | PH60S-Z<br>SPEAR      | PH60F-Z<br>FLAT       | ORP60-Z               |
|--------------|------------|------------------------------|-----------------------|-----------------------|-----------------------|-----------------------|
| PARAMETER    | RANGE      |                              | -2.00 to 16.00 pH     |                       |                       | -                     |
|              | RESOLUTION |                              | ±0.01pH; ±1 digit     |                       |                       | -                     |
| COND.        | RANGE      | 0 - 20.0 mS/cm               | -                     | -                     | -                     | -                     |
| TDS          | RANGE      | 0 - 10.0 ppt<br>(10,000 ppm) | -                     | -                     | -                     | -                     |
| SALINITY     | RANGE      | 0 - 10.0 ppt<br>(10,000 ppm) | -                     | -                     | -                     | -                     |
| ORP (mV)     | RANGE      |                              | ±1,000 mV*            |                       |                       | ±1,000 mV             |
| PRICE        |            | <a href="#">LOGIN</a>        | <a href="#">LOGIN</a> | <a href="#">LOGIN</a> | <a href="#">LOGIN</a> | <a href="#">LOGIN</a> |
| SALE         |            | <a href="#">LOGIN</a>        | <a href="#">LOGIN</a> | <a href="#">LOGIN</a> | <a href="#">LOGIN</a> | <a href="#">LOGIN</a> |

\*optional with [ORP60-DA](#) probe

# Water Testing

## 850 VALUE SERIES | HANDHELD

### Low cost, reliable, portable meter with simple operation

- Large LCD display made from acrylic and is resistant to scratches
- Quick and easy calibration
- IP57 waterproof rating
- Comes with everything you need, including calibration solutions and electrodes, in a convenient carry case

| PRODUCT CODE          | DESCRIPTION                       | PACK SIZE | PRICE                 | SALE                  |
|-----------------------|-----------------------------------|-----------|-----------------------|-----------------------|
| <a href="#">PH850</a> | Meter pH                          | Each      | <a href="#">LOGIN</a> | <a href="#">LOGIN</a> |
| <a href="#">EC850</a> | Meter Conductivity                | Each      | <a href="#">LOGIN</a> | <a href="#">LOGIN</a> |
| <a href="#">DO850</a> | Meter Dissolved Oxygen (3m cable) | Each      | <a href="#">LOGIN</a> | <a href="#">LOGIN</a> |

DO meter is supplied with an Optical DO Sensor!



APERA INSTRUMENTS

## 8500 PREMIUM SERIES | HANDHELD

### Designed for lab grade measurement in the field with a variety of intelligent functions

- Data logging with GLP data management (500 sets of data storage), USB data output
- Automatic multi-point calibration with due calibration reminder
- IP57 waterproof rating
- Self-diagnosis ensures the meter will be properly calibrated
- Comes with everything you need, including calibration solutions and electrodes, in a convenient carry case

| PRODUCT CODE           | DESCRIPTION                               | PACK SIZE | PRICE                 | SALE                  |
|------------------------|---|-----------|-----------------------|-----------------------|
| <a href="#">PH8500</a> | Meter pH Premium                          | Each      | <a href="#">LOGIN</a> | <a href="#">LOGIN</a> |
| <a href="#">EC8500</a> | Meter Conductivity Premium                | Each      | <a href="#">LOGIN</a> | <a href="#">LOGIN</a> |
| <a href="#">PC8500</a> | Meter pH/Cond/TDS/Salinity Premium        | Each      | <a href="#">LOGIN</a> | <a href="#">LOGIN</a> |
| <a href="#">DO8500</a> | Meter Dissolved Oxygen Premium (3m cable) | Each      | <a href="#">LOGIN</a> | <a href="#">LOGIN</a> |

DO meter is supplied with an Optical DO Sensor!



# Water Testing

## 910 LAB GRADE SERIES | BENCHTOP

The 910 Series benchtop meters are designed for laboratory grade measurement for general water solutions. They feature an intuitive operating system, automatic calibration with smart guidance and self-diagnosis, automatic data logger, and many more features while retaining simplicity in use.



- TFT colour screen with graphics and text guides
- Supplied with flexible electrode holder
- Complete kit with ready-to-use buffers
- IP54 waterproof rating
- Stable reading indication with a smiley face

| PRODUCT CODE          | DESCRIPTION                         | PACK SIZE | PRICE                 | SALE                  |
|-----------------------|-------------------------------------|-----------|-----------------------|-----------------------|
| <a href="#">PH910</a> | Meter pH Benchtop                   | Each      | <a href="#">LOGIN</a> | <a href="#">LOGIN</a> |
| <a href="#">EC910</a> | Meter Conductivity Benchtop         | Each      | <a href="#">LOGIN</a> | <a href="#">LOGIN</a> |
| <a href="#">PC910</a> | Meter pH/Cond/TDS/Salinity Benchtop | Each      | <a href="#">LOGIN</a> | <a href="#">LOGIN</a> |

## 9500 RESEARCH GRADE SERIES | BENCHTOP

The 9500 Series benchtop meters are designed for research laboratory professionals, offering long term reliability and accuracy in measurement. They are supplied with a 'TestBench' that includes a flexible electrode holder, an intelligent magnetic stirrer, and a buffer organiser.



- GLP data logging, data export (to PC or Printer)
- Calibration password protection
- Buffer organiser
- Self-diagnosis
- USB keyboard
- Supplied with flexible electrode holder
- Supplied with electrodes
- Includes magnetic stirrer

| PRODUCT CODE           | DESCRIPTION                           | PACK SIZE | PRICE                 | SALE                  |
|------------------------|---------------------------------------|-----------|-----------------------|-----------------------|
| <a href="#">PH9500</a> | Meter pH Test Bench                   | Each      | <a href="#">LOGIN</a> | <a href="#">LOGIN</a> |
| <a href="#">EC9500</a> | Meter Conductivity Test Bench         | Each      | <a href="#">LOGIN</a> | <a href="#">LOGIN</a> |
| <a href="#">PC9500</a> | Meter pH/Cond/TDS/Salinity Test Bench | Each      | <a href="#">LOGIN</a> | <a href="#">LOGIN</a> |



Printer and computer sold separately.

### Mini Printer Set

Pin-Type for 9500 Series Meters

Supplied with:

- 1x Printer
- 2x Ink ribbon
- 2x Printing paper
- 1x Power adapter
- 1x Data cable



| PRODUCT CODE           | DESCRIPTION      | PACK SIZE | PRICE                 | SALE                  |
|------------------------|------------------|-----------|-----------------------|-----------------------|
| <a href="#">TH192G</a> | Printer for 9500 | Each      | <a href="#">LOGIN</a> | <a href="#">LOGIN</a> |

Prices exclude GST. Special prices expire 31/03/25 or while stocks last. E.&O.E.

# Water Testing

## TN480 | TURBIDITY METERS

Ideal for testing solutions with colour.

### Infrared Light Source

- 90° scattering method
- Compliant with ISO 7027
- Simple calibration
- TruRead measurement mode
- GLP data management
- 4x AA batteries



## TN500 | TURBIDITY METERS

Ideal for testing the turbidity in drinking, ground, surface and saline waters as well as domestic and industrial wastes.

### Tungsten Lamp Light Source

- 90° scattering method
- Compliant U.S EPA 180.1
- Simple calibration
- TruRead measurement mode
- GLP data management
- Rechargeable lithium battery



APERA  
INSTRUMENTS

| PRODUCT CODE | DESCRIPTION              | PACK SIZE | PRICE | SALE  |
|--------------|--------------------------|-----------|-------|-------|
| TN480        | Meter Turbidity Infrared | Each      | LOGIN | LOGIN |

| PRODUCT CODE | DESCRIPTION                 | PACK SIZE | PRICE | SALE  |
|--------------|-----------------------------|-----------|-------|-------|
| TN500        | Meter Turbidity White Light | Each      | LOGIN | LOGIN |

# Rotary Evaporator

## RV 8 V

The IKA® RV 8 V is a manual rotary evaporator that is ideal for use in the chemical, pharmaceutical, and biotechnology industries.

Suited for use also in research and development, manufacturing, quality assurance, laboratories, as well as plant construction.

- 4L heating bath
- Vertical cooling
- Digital display for speed and bath temperature
- Manual lift for precise positioning

### Specifications:

- Cooling surface: 1,600cm<sup>2</sup>
- Speed range: 0 - 300rpm
- Heating temp. range: ambient - 180°C
- Dimensions: 510 x 490 x 345mm
- Weight: 25.76kg

### Supplied with:

- RV 8 drive
- HB digital S099
- RV 10.1 Glassware vertical
- RV 10.70 Vapor tube (NS 29/32)
- RV 10.8001 Seal
- RV 3.4 Woufff bottle



IKA®

| PRODUCT CODE | DESCRIPTION                  | PACK SIZE | PRICE | SALE  |
|--------------|------------------------------|-----------|-------|-------|
| 00100034821  | Evaporator Rotary IKA RV 8 V | Each      | LOGIN | LOGIN |

\*EUD Required

Prices exclude GST. Special prices expire 31/03/25 or while stocks last. E.&O.E.

# Mills

## TUBE MILL 100 CONTROL

The Tube Mill 100 Control is a batch mill with disposable grinding chambers. Suitable for 40ml and 100ml samples. Featuring a transparent grinding chamber and cover, allowing for easy observation of tests.

The mill can be used for hard (Mohs hardness up to 5), dry and brittle materials. It is especially suitable for grinding seeds, such as corn and wheat.



- Timer (From 5s - 3 min)
- USB interface
- Interval operation optional
- Variable speed (5,000 - 25,000rpm)
- Various operating modes
- Adjustable safety speed & time
- Programmable and storable test conditions
- Reproducible test results
- Touch keypad



[WATCH NOW](#)

| PRODUCT CODE                | DESCRIPTION                | PACK SIZE | PRICE                 | SALE                  |
|-----------------------------|----------------------------|-----------|-----------------------|-----------------------|
| <a href="#">0020007144!</a> | IKA® Tube Mill 100 Control | Each      | <a href="#">LOGIN</a> | <a href="#">LOGIN</a> |



[0004425000!](#)

[0020008386!](#)

### Disposable Grinding Chambers

| PRODUCT CODE                | DESCRIPTION   | CAPACITY | PACK SIZE | PRICE                 |
|-----------------------------|---|----------|-----------|-----------------------|
| <a href="#">0004425000!</a> | Grinding Chamber MT40.10 - PP, Standard Beater                  | 40mL     | PK10      | <a href="#">LOGIN</a> |
| <a href="#">0020017838!</a> | Grinding Chamber MT 40 P.10 IKA - PP, Bended Beater (45° angle) | 40mL     | PK10      | <a href="#">LOGIN</a> |
| <a href="#">0020008386!</a> | Grinding Chamber MT 100.10 IKA - PP, Standard Beater            | 100mL    | PK10      | <a href="#">LOGIN</a> |
| <a href="#">0020015380!</a> | Grinding Chamber MTT40.10 - PP, Titanium Beater                 | 40mL     | PK10      | <a href="#">LOGIN</a> |
| <a href="#">0020019576!</a> | Grinding Chamber MTT 100.10 IKA - PP, Titanium Beater           | 100mL    | PK10      | <a href="#">LOGIN</a> |

[View all accessories](#)

## A10 BASIC

This batch mill grinds hard, brittle, soft and fibrous materials for volumes up to 50mL. It can also handle tough, oily and aqueous samples.

- A10.1 cutter included in delivery - made of stainless steel
- Digital timer
- Counter (displays grinding time)
- Interval function
- Brushless motor
- Integrated cooling connectors



## A11

Ideal for impact grinding of hard, brittle or non-elastic materials. Can also be used for cutting grinding for pulverising soft, fibrous materials with optional blade (not incl. with delivery)

- A11.1 cutter included in delivery - made of high-grade stainless steel (Use for a Mohs hardness up to 6)
- Volumes up to 80mL
- Fixed speed of 28,000rpm



| PRODUCT CODE                | DESCRIPTION         | PACK SIZE | PRICE                 | SALE                  |
|-----------------------------|---------------------|-----------|-----------------------|-----------------------|
| <a href="#">0004020700!</a> | IKA® Mill A10 Basic | Each      | <a href="#">LOGIN</a> | <a href="#">LOGIN</a> |

[View all accessories](#)

| PRODUCT CODE                | DESCRIPTION   | PACK SIZE | PRICE                 | SALE                  |
|-----------------------------|---------------|-----------|-----------------------|-----------------------|
| <a href="#">0002900000!</a> | IKA® Mill A11 | Each      | <a href="#">LOGIN</a> | <a href="#">LOGIN</a> |

[View all accessories](#)

Prices exclude GST. Special prices expire 31/03/25 or while stocks last. E.&O.E.

# Viscometer

## ROTAVISC ME-VI

This IKA® Viscometer determines the liquid viscosity in all areas of application ranging from the laboratory to quality control. It is ideal for industries such as pharmaceuticals, chemicals, food production and cosmetics.

- Easy to operate
- 4.3" TFT display with intuitive menu
- Stepless measurement and positioning
- Speed range: 0.01 - 200rpm
- Viscosity range: 100 - 40,000,000mPas
- Three measuring modes

### Supplied with:

- Viscometer
- Rotastand
- Relevant spindle set
- PT100.8 temperature sensor
- Guard rail
- USB cable

### Applications:

- Food & Beverage
- Paper
- Paints & Coatings
- And many more!



| PRODUCT CODE                | DESCRIPTION    | PACK SIZE | PRICE                 | SALE                  |
|-----------------------------|----------------|-----------|-----------------------|-----------------------|
| <a href="#">00250003111</a> | ROTAVISC me-vi | Each      | <a href="#">LOGIN</a> | <a href="#">LOGIN</a> |

# Overhead Stirrers

## RW20 OVERHEAD STIRRER PACKAGE

- Digital speed display
- Robust, slimline, ergonomic design
- Max. stirring volume: 20L (H<sub>2</sub>O)
- Max. viscosity: 10,000mPas
- Speed range: 60 - 2,000rpm
- Max. torque: 150Ncm

### Supplied with:

- RW20
- R182 Bosshead
- R1826 Plate stand
- R1342 Paddle



## RW28 OVERHEAD STIRRER PACKAGE

- Digital speed display
- Quiet operation
- Max. stirring volume: 80L (H<sub>2</sub>O)
- Max. viscosity: 50,000mPas
- Speed range: 60 - 1,400rpm
- Max. torque: 900Ncm

### Supplied with:

- RW28
- R271 Bosshead
- R2723 Telescopic stand
- R1385 Paddle



| PRODUCT CODE                | DESCRIPTION  | PRICE                 | SALE                  |
|-----------------------------|--------------|-----------------------|-----------------------|
| <a href="#">00090116001</a> | RW20 Package | <a href="#">LOGIN</a> | <a href="#">LOGIN</a> |

| PRODUCT CODE                | DESCRIPTION  | PRICE                 | SALE                  |
|-----------------------------|--------------|-----------------------|-----------------------|
| <a href="#">00090232001</a> | RW28 Package | <a href="#">LOGIN</a> | <a href="#">LOGIN</a> |

Prices exclude GST. Special prices expire 31/03/25 or while stocks last. E.&O.E.



# Hotplate Stirrers

## RCT BASIC HOTPLATE STIRRER

**NEW!**

Updated design to the best-selling IKA® RCT Basic magnetic hotplate stirrer.

- Tempered shatterproof glass with aluminium alloy plate
- Large easy-to-read LED display
- USB and RS232 interface
- Safe, robust and compliant with standards

### Specifications:

- Plate diameter: 135mm Ø
- Heating temp. range: Ambient - 310°C
- Stirring volume: 20L (H<sub>2</sub>O)
- Dimensions: 160 x 85 x 270mm
- Speed range: 50 - 1,500rpm
- Stirrer bar length: 20 - 80mm
- Weight: 2.5kg


[WATCH NOW](#)

| PRODUCT CODE                | DESCRIPTION                | PRICE                 | SALE                  |
|-----------------------------|----------------------------|-----------------------|-----------------------|
| <a href="#">00250059271</a> | RCT Basic Hotplate Stirrer | <a href="#">LOGIN</a> | <a href="#">LOGIN</a> |

**IKA®**

## C-MAG HS7 HOTPLATE STIRRER

Magnetic stirrer with heating and ceramic heating plate which offers excellent chemical resistance.

- Stirring volume: 10L (H<sub>2</sub>O)
- Speed range: 100 - 1,500rpm
- Temperature range: 50 - 500°C
- Ceramic plate: 18 x 18cm
- Scale stirring display/control
- Digital temperature display



## C-MAG HS7 HOTPLATE STIRRER PACKAGE

Setup your lab with this C-Mag HS7 Package!

### Supplied with:

- C-Mag HS7 Magnetic Hotplate Stirrer
- ETS-D 5 electronic thermometer
- H16V Support rod
- H38 Holding rod
- H44 Boss head clamp



| PRODUCT CODE                | DESCRIPTION                | PRICE                 | SALE                  |
|-----------------------------|----------------------------|-----------------------|-----------------------|
| <a href="#">00035812001</a> | C-Mag HS7 Hotplate Stirrer | <a href="#">LOGIN</a> | <a href="#">LOGIN</a> |

| PRODUCT CODE                | DESCRIPTION       | PRICE                 | SALE                  |
|-----------------------------|-------------------|-----------------------|-----------------------|
| <a href="#">00090159001</a> | C-Mag HS7 Package | <a href="#">LOGIN</a> | <a href="#">LOGIN</a> |



Prices exclude GST. Special prices expire 31/03/25 or while stocks last. E.&O.E.

# Incubator

## INC 125 F DIGITAL

NEW PRODUCT

The INC 125 F digital convection incubator is ideal for microbiological applications up to 100°C with precise temperature control.

- Easy to clean
- Optimal temperature control
- Simple and intuitive operation
- Versatile accessories

### Specifications:

- Temperature range: RT +8°C to 100°C
- 125L capacity
- Temperature stability:  $\pm 0.3K$
- Dimensions: 700 x 720 x 635mm
- 2 chrome-plated wire grid trays included, can fit up to 6 grid shelves



IKA®

| PRODUCT CODE                | DESCRIPTION                     | PACK SIZE | PRICE                 | SALE                  |
|-----------------------------|---------------------------------|-----------|-----------------------|-----------------------|
| <a href="#">00201171721</a> | Incubator IKA INC 125 F Digital | Each      | <a href="#">LOGIN</a> | <a href="#">LOGIN</a> |

# Oven

## 125 BASIC

125L oven ideal for tempering, drying, aging and heating in the laboratory. Featuring an odorless insulation design that also ensures lower operating costs.

- Fast heat up time
- Precise temperature control
- Clear display and control menu

### Specifications:

- Temperature range: RT +5°C to 250°C
- 2 chrome-plated wire grid trays included, can fit up to 6 grid shelves
- Key lock function
- Glass door
- Overall dimensions: 700 x 825 x 650mm

PT100.31 temperature sensor (optional)

- Stainless steel
- Suitable up to 300°C



| PRODUCT CODE                | DESCRIPTION                 | PACK SIZE | PRICE                 | SALE                  |
|-----------------------------|-----------------------------|-----------|-----------------------|-----------------------|
| <a href="#">00200039561</a> | Oven 125 Basic              | Each      | <a href="#">LOGIN</a> | <a href="#">LOGIN</a> |
| <a href="#">00200095641</a> | PT100.31 Temperature Sensor | Each      | <b>CLEARANCE</b>      | <a href="#">LOGIN</a> |

Prices exclude GST. Special prices expire 31/03/25 or while stocks last. E.&O.E.

# Liquid Handling

## PIPETTOR | IKA® PETTE VARIO

An ergonomic feel combined with uncompromising precise performance. The IKA® pipettes can be used for many applications in the modern laboratory.

### Ergonomic design

Easy one-handed operation with exchangeable grips for a comfortable fit

### Colour coding

Simplifies the rapid selection of a suitable pipette

### Durable construction

Made with high quality materials, resistance to impact, UV and chemicals, ensuring long-term reliable dosing

### Thermally insulated

Reduces volume errors

### Fully autoclavable

Ensuring easy sterilisation. This guarantees fault-free, precise and safe operation

### User-friendly calibration

Easy-to-use IKA® software for planning, performing and recording calibration tests

### Simple maintenance

The IKA® Pettes can be disassembled, cleaned and adjusted in just a few simple steps without any additional tool

### Made in Germany

100% produced, assembled and calibrated in Germany

| PRODUCT CODE | VOLUME RANGE  | PACK SIZE | PRICE                 | SALE                  |
|--------------|---------------|-----------|-----------------------|-----------------------|
| 0020011210I  | 0.1 - 2µL     | Each      | <a href="#">LOGIN</a> | <a href="#">LOGIN</a> |
| 0020011211I  | 0.5 - 10µL    | Each      | <a href="#">LOGIN</a> | <a href="#">LOGIN</a> |
| 0020011213I  | 2 - 20µL      | Each      | <a href="#">LOGIN</a> | <a href="#">LOGIN</a> |
| 0020011214I  | 10 - 100µL    | Each      | <a href="#">LOGIN</a> | <a href="#">LOGIN</a> |
| 0020011215I  | 20 - 200µL    | Each      | <a href="#">LOGIN</a> | <a href="#">LOGIN</a> |
| 0020011216I  | 100 - 1,000µL | Each      | <a href="#">LOGIN</a> | <a href="#">LOGIN</a> |
| 0020011217I  | 0.5 - 5mL     | Each      | <a href="#">LOGIN</a> | <a href="#">LOGIN</a> |
| 0020011218I  | 1 - 10mL      | Each      | <a href="#">LOGIN</a> | <a href="#">LOGIN</a> |

### Accessories

| PRODUCT CODE | DESCRIPTION                   | PACK SIZE | PRICE                 | SALE                  |
|--------------|-------------------------------|-----------|-----------------------|-----------------------|
| 0020018987I  | Pipette Rack IKA® Linea       | Each      | <a href="#">LOGIN</a> | <a href="#">LOGIN</a> |
| 0020107134I  | Pipette Stand IKA® Ronda      | Each      | <a href="#">LOGIN</a> | <a href="#">LOGIN</a> |
| 0020016449I  | Filter for IKA® Pette 0.5-5mL | Each      | <a href="#">LOGIN</a> | <a href="#">LOGIN</a> |
| 0020016450I  | Filter for IKA® Pette 1-10mL  | Each      | <a href="#">LOGIN</a> | <a href="#">LOGIN</a> |

**SAVE BIG!**

\*Excluding 1-10mL range  
0020011218I



Supplied with 3 ergonomic grips

soft grip    firm grip large    firm grip small



0020018987I



0020107134I

Prices exclude GST. Special prices expire 31/03/25 or while stocks last. E.&O.E.

# Liquid Handling

## PIPETTOR | LABCO® VARIABLE SINGLE CHANNEL

One of our best sellers in the LabCo® range.  
Used by so many laboratories all around Australia.

### Ergonomic

An integral finger support and lightweight design reduces physical strain, making repetitive jobs less of a chore

### Accurate

Be confident in accuracy; each pipettor is supplied with a performance certificate, according to ISO8655/DIN12650

### Volume Setting

Is clearly displayed on the side of the unit

### Ejector Key

Conveniently located, allowing one handed operation

### Range

Range From 0.5µL to 5mL

### Calibration & Maintenance

Is easy with the supplied calibration tool

### Autoclavable\*

Fully Autoclavable!

\*121°C for 20 minutes

\*It is recommend that the performance of the pipettor is checked after each autoclave

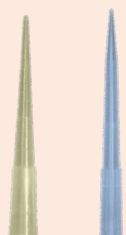


| PRODUCT CODE                | VOLUME RANGE  | PACK SIZE | PRICE                 | SALE                  |
|-----------------------------|---------------|-----------|-----------------------|-----------------------|
| <a href="#">550.002.005</a> | 0.5 - 10µL    | Each      | <a href="#">LOGIN</a> | <a href="#">LOGIN</a> |
| <a href="#">550.002.007</a> | 2 - 20µL      | Each      | <a href="#">LOGIN</a> | <a href="#">LOGIN</a> |
| <a href="#">550.002.009</a> | 10 - 100µL    | Each      | <a href="#">LOGIN</a> | <a href="#">LOGIN</a> |
| <a href="#">550.002.011</a> | 20 - 200µL    | Each      | <a href="#">LOGIN</a> | <a href="#">LOGIN</a> |
| <a href="#">550.002.013</a> | 100 - 1,000µL | Each      | <a href="#">LOGIN</a> | <a href="#">LOGIN</a> |
| <a href="#">550.002.015</a> | 1 - 5mL       | Each      | <a href="#">LOGIN</a> | <a href="#">LOGIN</a> |
| <a href="#">550.002.017</a> | 1 - 10mL      | Each      | <a href="#">LOGIN</a> | <a href="#">LOGIN</a> |



### LabCo Pipette Tips

**OVERSTOCKED!**



| PRODUCT CODE                | DESCRIPTION  | PACK SIZE | PRICE                 | SALE                  |
|-----------------------------|--------------|-----------|-----------------------|-----------------------|
| <a href="#">550.002.511</a> | 200uL Yellow | PK1,000   | <a href="#">LOGIN</a> | <a href="#">LOGIN</a> |
| <a href="#">550.002.516</a> | 1,000uL Blue | PK500     | <a href="#">LOGIN</a> | <a href="#">LOGIN</a> |



See our entire range of pipette tips [here](#)

# Liquid Handling

## ELECTRONIC PIPETTE FILLER

Experience confidence in control and reduce fatigue with the ergonomic and lightweight LabCo® Electronic pipette filler. Easily aspirate up to 25mL in a matter of 5 seconds! When fully charged, you can expect more than 8 hours of intermittent use.

| SPECIFICATIONS    |                  |
|-------------------|------------------|
| Aspirating Speeds | 8                |
| Dispensing Speeds | 8/Gravity        |
| Volume Range      | 0.1 - 100mL      |
| BATTERY           |                  |
| Battery Type      | Lithium Ion      |
| Service Life      | 15+ Hours        |
| Charging Time     | 2 Hours (approx) |



Large, easily read LCD display



| PRODUCT CODE                | DESCRIPTION                             | PACK SIZE | PRICE                 | SALE                  |
|-----------------------------|---|-----------|-----------------------|-----------------------|
| <a href="#">550.001.005</a> | Electronic Pipette Filler               | Each      | <a href="#">LOGIN</a> | <a href="#">LOGIN</a> |
| <a href="#">550.001.022</a> | Replacement 0.45µm Filter (non-sterile) | Each      | <a href="#">LOGIN</a> | <a href="#">LOGIN</a> |

## PIPETTE CONTROLLER

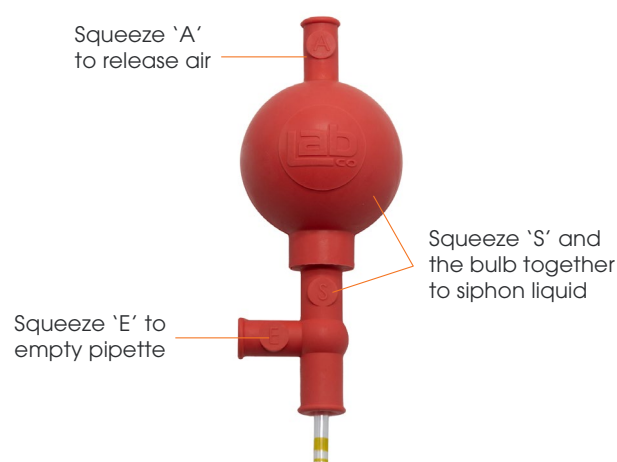
- Ergonomic, robust and lightweight design
- Pipette range from 0.1mL to 100mL
- Replaceable, internal filter



| PRODUCT CODE                | DESCRIPTION        | PACK SIZE | PRICE                 | SALE                  |
|-----------------------------|--------------------|-----------|-----------------------|-----------------------|
| <a href="#">550.001.200</a> | Pipette Controller | Each      | <a href="#">LOGIN</a> | <a href="#">LOGIN</a> |

## PIPETTE FILLER

- 3 valve design with red rubber composition



| PRODUCT CODE                | DESCRIPTION    | PACK SIZE | PRICE                 | SALE                  |
|-----------------------------|----------------|-----------|-----------------------|-----------------------|
| <a href="#">550.001.270</a> | Pipette Filler | Each      | <a href="#">LOGIN</a> | <a href="#">LOGIN</a> |

Prices exclude GST. Special prices expire 31/03/25 or while stocks last. E.&O.E.

# Centrifuges

## HAEMATOCRIT

Ideal for measuring the volume of red blood cells in blood for the diagnosis and monitoring of certain medical conditions.

- Supplied with one rotor for haematocrit tubes
- LCD display
- Automatic lid-lock
- Over speed detection
- Over temperature detection
- Automatic internal diagnosis
- Maintenance free DC Brushless motor
- Sound alert function
- Short run time function

Max Speed: 14,000rpm  
Range: 200 to 14,000rpm  
Max RCF: 18,260 x G



400.003.110 rotor supplied



| PRODUCT CODE                | DESCRIPTION            | PACK SIZE | PRICE                 | SALE                  |
|-----------------------------|------------------------|-----------|-----------------------|-----------------------|
| <a href="#">400.003.100</a> | Centrifuge Haematocrit | Each      | <a href="#">LOGIN</a> | <a href="#">LOGIN</a> |

## MICRO LOW SPEED

Ideal for routine medical practice in hospitals, clinics and research institutes.

- Built-in fixed angle rotor
- Speed switch (rpm/rcf)
- LCD display
- Automatic lid-lock
- Over speed detection
- Automatic internal diagnosis
- Maintenance free DC Brushless motor
- Sound alert function

Max Speed: 5,000rpm  
Range: 300 to 5,000rpm  
Max RCF: 2,350 x G

Suitable for 6 tubes:

- 1.5mL/2mL
- 5mL/7mL/10mL
- 15mL



## MICRO

Ideal for quick spin downs and micro filtration.

- Dual door interlock design
- Start/Stop functions by closing/opening lid
- Supplied with 1.5mL/2mL tube rotor and PCR strip rotor

Max Speed: 7,000rpm  
Max RCF: 2,680 x G  
Run Time: Continuous



| PRODUCT CODE                | DESCRIPTION     | PACK SIZE | PRICE                 | SALE                  |
|-----------------------------|-----------------|-----------|-----------------------|-----------------------|
| <a href="#">400.003.020</a> | Micro Low Speed | Each      | <a href="#">LOGIN</a> | <a href="#">LOGIN</a> |

| PRODUCT CODE                | DESCRIPTION      | PACK SIZE | PRICE                 | SALE                  |
|-----------------------------|------------------|-----------|-----------------------|-----------------------|
| <a href="#">400.003.005</a> | Micro Centrifuge | Each      | <a href="#">LOGIN</a> | <a href="#">LOGIN</a> |

Prices exclude GST. Special prices expire 31/03/25 or while stocks last. E.&O.E.

# Shakers

## ORBITAL/HORIZONTAL 7.5KG

- Maximum shaking weight (including platform): 7.5kg
- Mixing diameter: 10mm
- Speed range: 100-350rpm (horizontal) / 100-500rpm (orbital)
- Wide range of platforms available for multiple applications
- Over speed detection & protection
- Digital LCD displays speed & timer
- Maintenance free DC brushless motor



| PRODUCT CODE                | DESCRIPTION             | PACK SIZE | PRICE                 | SALE                    |
|-----------------------------|-------------------------|-----------|-----------------------|-------------------------|
| <a href="#">400.101.150</a> | Shaker Orbital 7.5kg    | Each      | <a href="#">LOGIN</a> | <b>BONUS ATTACHMENT</b> |
| <a href="#">400.102.150</a> | Shaker Horizontal 7.5kg | Each      | <a href="#">LOGIN</a> | <b>BONUS ATTACHMENT</b> |



### BONUS ATTACHMENT FOR FREE!

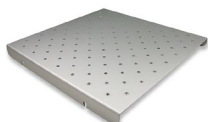
Universal Attachment to suit LabCo 7.5kg shakers  
Product Code: 400.101.155

**BONUS**

## ACCESSORIES



[400.101.155](#)



[400.101.156](#)



[400.101.157](#)



[400.101.158](#)



[400.101.159](#)



[400.101.200](#)

| PRODUCT CODE                | DESCRIPTION                                      | PACK SIZE | PRICE                 |
|-----------------------------|--|-----------|-----------------------|
| <a href="#">400.101.155</a> | Orbital/Horizontal Attachment Universal          | Each      | <a href="#">LOGIN</a> |
| <a href="#">400.101.156</a> | Orbital/Horizontal Attachment Fixing Clip        | Each      | <a href="#">LOGIN</a> |
| <a href="#">400.101.157</a> | Orbital/Horizontal Attachment Universal Vertical | Each      | <a href="#">LOGIN</a> |
| <a href="#">400.101.158</a> | Orbital/Horizontal Attachment Dish               | Each      | <a href="#">LOGIN</a> |
| <a href="#">400.101.159</a> | Orbital/Horizontal Attachment Replacement Bar    | Each      | <a href="#">LOGIN</a> |
| <a href="#">400.101.200</a> | Fixing Clip for 25mL Flask                       | Each      | <a href="#">LOGIN</a> |
| <a href="#">400.101.201</a> | Fixing Clip for 50mL Flask                       | Each      | <a href="#">LOGIN</a> |
| <a href="#">400.101.202</a> | Fixing Clip for 100mL Flask                      | Each      | <a href="#">LOGIN</a> |
| <a href="#">400.101.203</a> | Fixing Clip for 200-250mL Flask                  | Each      | <a href="#">LOGIN</a> |
| <a href="#">400.101.204</a> | Fixing Clip for 500mL Flask                      | Each      | <a href="#">LOGIN</a> |

**BONUS FREE ATTACHMENT!**



Prices exclude GST. Special prices expire 31/03/25 or while stocks last. E.&O.E.

# Magnetic Stirrers



## 1.5L

- Stirs up to 1.5L
- Square PET plate
- Compact design with small footprint
- Resistant to corrosion & easy to clean
- Supplied with electrode holder with clamp
- Maintenance free DC brushless motor

### Specifications:

- Speed range: 300 - 2,000rpm
- Dimensions: 150 x 144 x 54mm
- Only 300 grams!



| PRODUCT CODE                | DESCRIPTION                 | PACK SIZE | PRICE                 | SALE                  |
|-----------------------------|-----------------------------|-----------|-----------------------|-----------------------|
| <a href="#">400.100.002</a> | Stirrer Magnetic 1.5L LabCo | Each      | <a href="#">LOGIN</a> | <a href="#">LOGIN</a> |

## 20L

- Stirs up to 20L
- Ceramic coated stainless steel plate
- Resistant to corrosion & easy to clean
- Constant speed control, even during changes in load
- High magnetic field reduces stirrer bar decoupling
- Maintenance free DC brushless motor

### Specifications:

- Speed range: 100 - 1,500rpm
- Dimensions: 160 x 280 x 85mm
- Weight: 2.8kg



| PRODUCT CODE                | DESCRIPTION                | PACK SIZE | PRICE                 | SALE                  |
|-----------------------------|----------------------------|-----------|-----------------------|-----------------------|
| <a href="#">400.100.011</a> | Stirrer Magnetic 20L LabCo | Each      | <a href="#">LOGIN</a> | <a href="#">LOGIN</a> |

## 20L

- Stirs up to 20L
- Large square, ceramic glass plate
- Resistant to corrosion & easy to clean
- High magnetic field reduces stirrer bar decoupling
- Maintenance free DC brushless motor

### Specifications:

- Speed range: 100 - 1,500rpm
- Dimensions: 215 x 360 x 112mm
- Weight: 5.3kg



| PRODUCT CODE                | DESCRIPTION                | PACK SIZE | PRICE                 | SALE                  |
|-----------------------------|----------------------------|-----------|-----------------------|-----------------------|
| <a href="#">400.100.021</a> | Stirrer Magnetic 20L LabCo | Each      | <a href="#">LOGIN</a> | <a href="#">LOGIN</a> |

Create an online account with us - it's easy!

Pricing | Online Exclusives | Fast Check Out & Quotes | Templates | Check Back Order | And More!

[Register Now](#)





# LAB ESSENTIALS

## AUTOCLAVE TAPE

- Lead free, steam indicator design
- Made without natural rubber latex
- High quality adhesive
- Can be written on or labelled with pre-printed labels



**PRICE DROP!**

| PRODUCT CODE | DIMENSIONS | PACK SIZE | OLD PRICE | NEW PRICE | BREAK QTY |
|--------------|------------|-----------|-----------|-----------|-----------|
| 500.750.012  | 12mm x 50m | Each      | LOGIN     | LOGIN     | LOGIN     |
| 500.750.018  | 18mm x 55m | Each      | LOGIN     | LOGIN     | LOGIN     |
| 500.750.024  | 24mm x 55m | Each      | LOGIN     | LOGIN     | LOGIN     |

## ISOPROPYL ALCOHOL WIPES

- 70% v/v Isopropyl Alcohol
- Wipes are 100% plastic free!
- Kills 99.99% of germs
- Rapid evaporation
- ARTG listed AUST L 402231
- Made in Australia



**50% OFF!**

Stock expires June 2025

| PRODUCT CODE | DESCRIPTION             | PACK SIZE | PRICE | SALE  |
|--------------|-------------------------|-----------|-------|-------|
| 850.750.050  | Isopropyl Alcohol Wipes | PK60      | LOGIN | LOGIN |

**STOCK EXPIRES JUNE 2025**

Order in multiples of 12 for carton quantities for easier storage

## DELICATE TASK WIPES

- Low lint
- Good dry and wet strength
- 100% virgin pulp
- Pop up style box

**SAVE \$120 PER CARTON!**

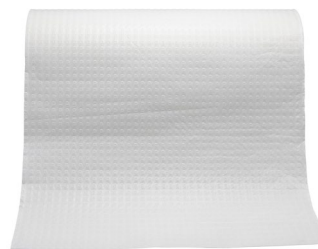


| PRODUCT CODE | DESCRIPTION         | PACK SIZE | PRICE EACH | CARTON |
|--------------|---------------------|-----------|------------|--------|
| 850.300.050  | Delicate Task Wipes | PK280     | LOGIN      | LOGIN  |

\*Must order in multiples of 60 (full cartons) to receive the special price

## BENCH PROTECTOR

- 4 layers
- Continuous roll
- Made from 100% virgin pulp paper and polyethylene
- 41.5cm x 91m



| PRODUCT CODE | DESCRIPTION     | PACK SIZE | PRICE | SALE  |
|--------------|-----------------|-----------|-------|-------|
| 850.850.050  | Bench Protector | PK2       | LOGIN | LOGIN |

# Gloves



## CRYO

- Ideal for handling very cold objects
- Can be used for handling objects in the vapour stage of liquid nitrogen\*, ranging from -120 to -190°C
- 50cm length (elbow length)



| PRODUCT CODE               | DESCRIPTION                    | PACK SIZE | PRICE                 | SALE                  |
|----------------------------|--------------------------------|-----------|-----------------------|-----------------------|
| <a href="#">32GLO-CMES</a> | Glove Cryo Elbow Length Small  | PR        | <a href="#">LOGIN</a> | <a href="#">LOGIN</a> |
| <a href="#">32GLO-CMEM</a> | Glove Cryo Elbow Length Medium | PR        | <a href="#">LOGIN</a> | <a href="#">LOGIN</a> |
| <a href="#">32GLO-CMEL</a> | Glove Cryo Elbow Length Large  | PR        | <a href="#">LOGIN</a> | <a href="#">LOGIN</a> |

\*Gloves should not be immersed in liquid nitrogen

## HEAT RESISTANT

- Ideal for handling hot objects
- Withstands heat contact of 250°C for 13 seconds
- 30cm length



| PRODUCT CODE            | DESCRIPTION                  | PACK SIZE | PRICE                 | SALE                  |
|-------------------------|------------------------------|-----------|-----------------------|-----------------------|
| <a href="#">GLO-NM</a>  | Glove Heat Resistant Medium  | PR        | <a href="#">LOGIN</a> | <a href="#">LOGIN</a> |
| <a href="#">GLO-NL</a>  | Glove Heat Resistant Large   | PR        | <a href="#">LOGIN</a> | <a href="#">LOGIN</a> |
| <a href="#">GLO-NXL</a> | Glove Heat Resistant X-Large | PR        | <a href="#">LOGIN</a> | <a href="#">LOGIN</a> |

## ACTIVARMR® HEAT RESISTANT

**CLEARANCE**

- Can handle hot objects up to 250°C
- No outseams allow for enhanced comfort and flexibility and the felt liner is sweat-absorbent
- Bonded nitrile coating allows for snag, puncture, cut and abrasion resistance
- Excellent grip in dry or oily conditions



| PRODUCT CODE             | DESCRIPTION                                       | SIZE | PACK SIZE | QTY AVAIL | PRICE                 | SALE                  |
|--------------------------|---|------|-----------|-----------|-----------------------|-----------------------|
| <a href="#">42-474-9</a> | Glove Activarmr Heat-Resistant Full-Length Gloves | 9    | PR        | 23        | <a href="#">LOGIN</a> | <a href="#">LOGIN</a> |

\*Discontinued once stock sold

Prices exclude GST. Special prices expire 31/03/25 or while stocks last. E.&O.E.

# Timers



## STOPWATCH DIGITAL WATERPROOF

- 1/100 second stopwatch with lap counter
- Split timing function
- Calendar shows day, month, year
- Clock shows hours, minutes, seconds
- 12/24 hour format
- Waterproof to IP65
- Operation range: up to 23 hours, 59 minutes, 59 seconds
- Includes adjustable wrist strap/lanyard & LR44 battery

CONTAINS BUTTON BATTERY!

\*This professional equipment is not intended for sale to the general public and/or to be used where children are present



| PRODUCT CODE             | DESCRIPTION                  | PACK SIZE | PRICE                 | SALE                  |
|--------------------------|------------------------------|-----------|-----------------------|-----------------------|
| <a href="#">28-405-0</a> | Stopwatch Digital Waterproof | Each      | <a href="#">LOGIN</a> | <a href="#">LOGIN</a> |

## TIMER COUNT UP & DOWN FOUR CHANNEL

- Four independent timer channels
- Programmable from 99 hours, 49 minutes, 59 seconds
- Alarm sounds for 1 minute when counts down to zero
- Timer memory recall function for previous time set
- Built-in stand, magnet and clip

CONTAINS BUTTON BATTERY!

\*This professional equipment is not intended for sale to the general public and/or to be used where children are present



| PRODUCT CODE           | DESCRIPTION                        | PACK SIZE | PRICE                 | SALE                  |
|------------------------|------------------------------------|-----------|-----------------------|-----------------------|
| <a href="#">PTR388</a> | Timer Count Up & Down Four Channel | Each      | <a href="#">LOGIN</a> | <a href="#">LOGIN</a> |

## TIMER ELECTRONIC UP/DOWN

- Display range: 23 hours, 59 minutes, 59 seconds
- Clock function: alarm rings at end of pre-set time
- Stand for desktop, magnetic fixture for metal surfaces, clip for hanging
- Overall dimensions: 76 x 80 x 16mm



| PRODUCT CODE            | DESCRIPTION              | PACK SIZE | PRICE                 | SALE                  |
|-------------------------|--------------------------|-----------|-----------------------|-----------------------|
| <a href="#">LABTR01</a> | Timer Electronic Up/Down | Each      | <a href="#">LOGIN</a> | <a href="#">LOGIN</a> |

Prices exclude GST. Special prices expire 31/03/25 or while stocks last. E.&O.E.

# Thermometers



## DIGITAL HANDHELD P300

- Splash protected and washable (IP54)
- Illuminated display with large figures
- Blue backlight
- Storage of Max / Min values
- Hold function for measurements
- Integrated sensor holder for on handed operation



**Specifications:**

- NTC probe
- Temperature range: -40 to 200°C
- Dimensions: 130 x 65 x 25mm
- 2x AA batteries

## DIGITAL INFRARED

- Non-contact thermometer
- Infrared technology to measure the surface temperature
- Aim, pull the trigger, read the temperature
- Lightweight and compact
- Easy to use



**Specifications:**

- Single offset spot laser
- Temperature range: -35 to 365°C
- Dimensions: 147.9 x 112.6 x 41.4mm
- 2x AAA batteries

| PRODUCT CODE              | DESCRIPTION                       | PACK SIZE | PRICE                 | SALE                  |
|---------------------------|-----------------------------------|-----------|-----------------------|-----------------------|
| <a href="#">5000-0300</a> | Thermometer Digital Handheld P300 | Each      | <a href="#">LOGIN</a> | <a href="#">LOGIN</a> |



| PRODUCT CODE              | DESCRIPTION                  | PACK SIZE | PRICE                 | SALE                  |
|---------------------------|------------------------------|-----------|-----------------------|-----------------------|
| <a href="#">5020-0385</a> | Thermometer Digital Infrared | Each      | <a href="#">LOGIN</a> | <a href="#">LOGIN</a> |

## GENERAL PURPOSE

- White back
- Glass



Blue plastic case with pocket clip  
[750.031.160](#)



| PRODUCT CODE                | DESCRIPTION        | LENGTH | SPIRIT COLOUR | IMMERSION TYPE | PACK SIZE | PRICE                 | SALE                  |
|-----------------------------|--------------------|--------|---------------|----------------|-----------|-----------------------|-----------------------|
| <a href="#">44-450-0</a>    | -10 - 50°C x 1°C   | 150mm  | Red           | Total          | Each      | <a href="#">LOGIN</a> | <a href="#">LOGIN</a> |
| <a href="#">44-430-0</a>    | -10 - 110°C x 1°C  | 150mm  | Red           | Total          | Each      | <a href="#">LOGIN</a> | <a href="#">LOGIN</a> |
| <a href="#">44-100-4</a>    | -10 - 110°C x 1°C  | 205mm  | Red           | Total          | Each      | <a href="#">LOGIN</a> | <a href="#">LOGIN</a> |
| <a href="#">44-401-1</a>    | -10 - 50°C x 0.5°C | 305mm  | Red           | Total          | Each      | <a href="#">LOGIN</a> | <a href="#">LOGIN</a> |
| <a href="#">44-011-8</a>    | -10 - 150°C x 1°C  | 305mm  | Red           | Total          | Each      | <a href="#">LOGIN</a> | <a href="#">LOGIN</a> |
| <a href="#">750.025.345</a> | -10 - 110°C x 1°C  | 305mm  | Blue          | Partial        | Each      | <a href="#">LOGIN</a> | <a href="#">LOGIN</a> |
| <a href="#">750.031.160</a> | -10 - 110°C x 1°C  | 150mm  | Red           | Total          | Each      | <a href="#">LOGIN</a> | <a href="#">LOGIN</a> |
| <a href="#">750.031.245</a> | -10 - 110°C x 1°C  | 205mm  | Red           | Partial        | Each      | <a href="#">LOGIN</a> | <a href="#">LOGIN</a> |
| <a href="#">750.031.305</a> | -10 - 50°C x 0.5°C | 305mm  | Red           | Partial        | Each      | <a href="#">LOGIN</a> | <a href="#">LOGIN</a> |
| <a href="#">750.031.345</a> | -10 - 110°C x 1°C  | 305mm  | Red           | Partial        | Each      | <a href="#">LOGIN</a> | <a href="#">LOGIN</a> |
| <a href="#">750.031.346</a> | -20 - 110°C x 1°C  | 305mm  | Red           | Total          | Each      | <a href="#">LOGIN</a> | <a href="#">LOGIN</a> |
| <a href="#">750.031.357</a> | -10 - 150°C x 1°C  | 305mm  | Red           | Partial        | Each      | <a href="#">LOGIN</a> | <a href="#">LOGIN</a> |

Prices exclude GST. Special prices expire 31/03/25 or while stocks last. E.&O.E.

## Stands

Retort stands provide an adjustable support for a range of laboratory apparatus, especially for heating applications, offering a safe and stable setup.

- Cast Iron
- Supplied with 10mm Ø rod



| PRODUCT CODE                | DESCRIPTION  | BASE SIZE   | ROD LENGTH | PACK SIZE | PRICE                 | SALE                  |
|-----------------------------|--------------|-------------|------------|-----------|-----------------------|-----------------------|
| <a href="#">560.070.050</a> | Stand Retort | 115 x 75mm  | 500mm      | Each      | <a href="#">LOGIN</a> | <a href="#">LOGIN</a> |
| <a href="#">560.070.051</a> | Stand Retort | 160 x 100mm | 500mm      | Each      | <a href="#">LOGIN</a> | <a href="#">LOGIN</a> |
| <a href="#">560.070.052</a> | Stand Retort | 200 x 125mm | 600mm      | Each      | <a href="#">LOGIN</a> | <a href="#">LOGIN</a> |
| <a href="#">560.070.053</a> | Stand Retort | 250 x 160mm | 700mm      | Each      | <a href="#">LOGIN</a> | <a href="#">LOGIN</a> |
| <a href="#">560.070.054</a> | Stand Retort | 315 x 200mm | 700mm      | Each      | <a href="#">LOGIN</a> | <a href="#">LOGIN</a> |

## Bosshead

Used in conjunction with clamps and retort stands, bossheads hold items in place during experiments and offer a sturdy support.

- Chrome plated cast alloy
- Fixed stem that holds objects in fixed position



560.070.030



560.070.035

| PRODUCT CODE                | DESCRIPTION                           | PACK SIZE | PRICE                 | SALE                  |
|-----------------------------|---------------------------------------|-----------|-----------------------|-----------------------|
| <a href="#">560.070.030</a> | Bosshead Straight Standard 0 - 21mm   | Each      | <a href="#">LOGIN</a> | <a href="#">LOGIN</a> |
| <a href="#">560.070.035</a> | Bosshead Straight Heavy Duty 0 - 15mm | Each      | <a href="#">LOGIN</a> | <a href="#">LOGIN</a> |

## Jacks

This laboratory jack or 'scissor jack', provides a strong and stable support for various equipment used in the laboratory.

- Rigid aluminium support platform
- Exceptional stability and durability
- Large ergonomic control knob
- 60kg maximum load



| PRODUCT CODE                | DESCRIPTION               | MAX. HEIGHT | PACK SIZE | PRICE                 | SALE                  |
|-----------------------------|---------------------------|-------------|-----------|-----------------------|-----------------------|
| <a href="#">560.070.151</a> | Jack Laboratory 150x150mm | 280mm       | Each      | <a href="#">LOGIN</a> | <a href="#">LOGIN</a> |
| <a href="#">560.070.152</a> | Jack Laboratory 200x200mm | 290mm       | Each      | <a href="#">LOGIN</a> | <a href="#">LOGIN</a> |
| <a href="#">560.070.153</a> | Jack Laboratory 250x250mm | 380mm       | Each      | <a href="#">LOGIN</a> | <a href="#">LOGIN</a> |

Prices exclude GST. Special prices expire 31/03/25 or while stocks last. E.&O.E.

**CLEARANCE**

## SPECTROPHOTOMETER XD7000 VIS

- Latest technology
- Automatic test recognition
- Analytical quality assurance
- Built-in security levels
- Additional functions
- Interfaces for data processing



## BOD MEASUREMENT SYSTEM BD600



- Reduced sample preparation
- Automatic measurements
- Easy and quick interpretation of measurement values
- Consistent measurement conditions
- Sample identification and tracking
- Remote controllable operation



| PRODUCT CODE              | DESCRIPTION                  | PACK SIZE | PRICE            | SALE                  |
|---------------------------|------------------------------|-----------|------------------|-----------------------|
| <a href="#">71307000T</a> | Spectrophotometer XD7000 VIS | Each      | <b>CLEARANCE</b> | <a href="#">LOGIN</a> |

Available Quantity: 1

| PRODUCT CODE             | DESCRIPTION                  | PACK SIZE | PRICE            | SALE                  |
|--------------------------|------------------------------|-----------|------------------|-----------------------|
| <a href="#">2444460T</a> | BOD Measurement System BD600 | Each      | <b>CLEARANCE</b> | <a href="#">LOGIN</a> |

Available Quantity: 1

## FILTRATION SET LF32 47MM 100ML SS

- No.16 silicone stopper connection
- 100ml SS funnel capacity
- 47mm filter diameter
- SS membrane support and base
- 1,200mL PC waste bottle with cover
- Overflow protection



| PRODUCT CODE              | DESCRIPTION                       | PACK SIZE | PRICE            | SALE                  |
|---------------------------|-----------------------------------|-----------|------------------|-----------------------|
| <a href="#">197010-32</a> | Filtration Set LF32 47mm 100mL SS | Each      | <b>CLEARANCE</b> | <a href="#">LOGIN</a> |

Available Quantity: 1

## PRODUCT CATALOGUE | 2025

NEW



 **DOWNLOAD**

View our entire product range!

2,400 Products | 174 Pages | View Online

Before you go...

Don't forget to...

# Join our Scavenger Hunt!

See Page 2



ABN 57 622 896 593  
ACN 622 896 593  
1800 052 226  
PO Box 5816,  
Brendale, QLD 4500

sales@labcoscientific.com.au  
labcoscientific.com.au